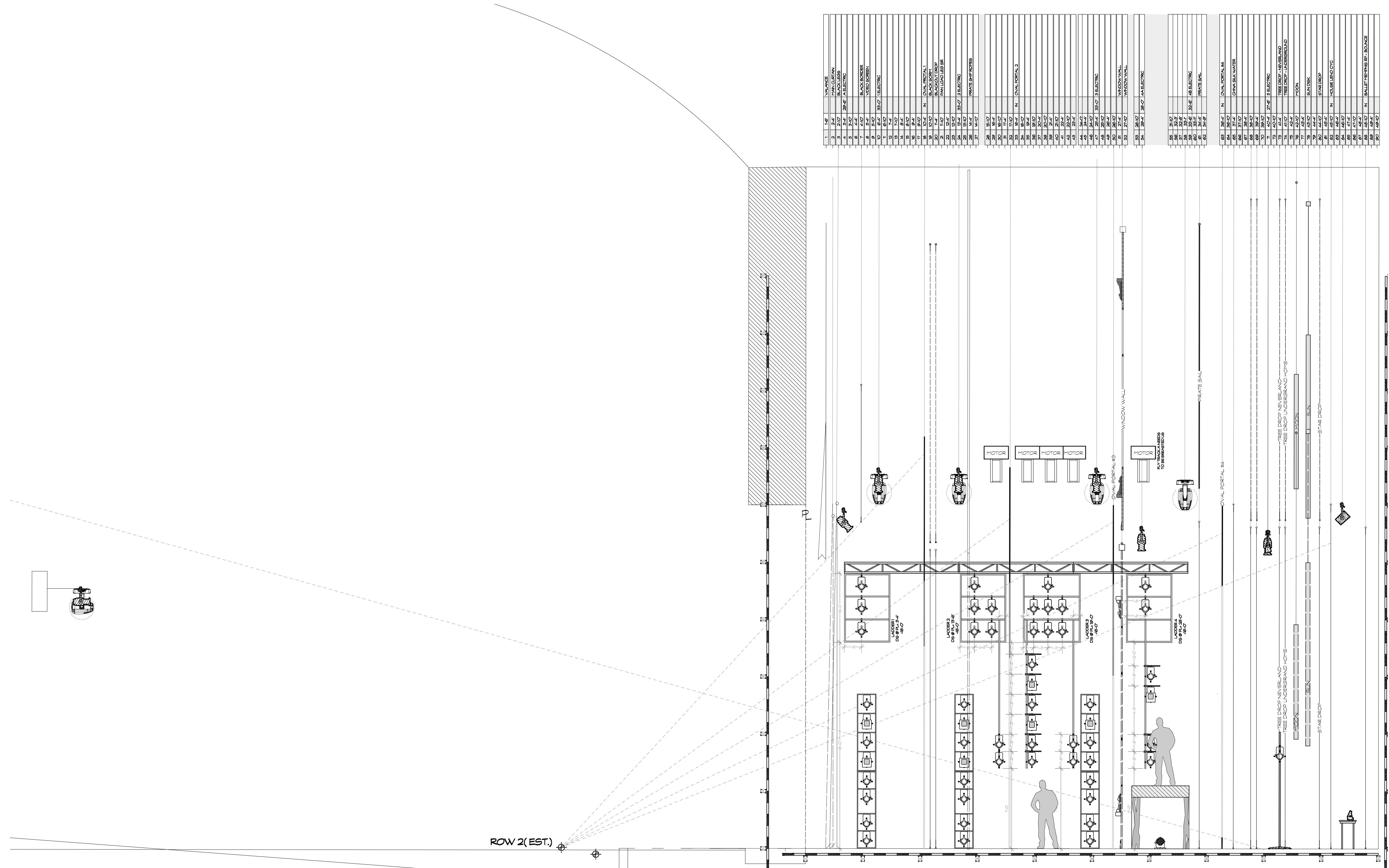


**THIS DRAWING CONTAINS VISUAL CONCEPTS AND CONSTRUCTION SUGGESTIONS ONLY.**

The Designer is unqualified to determine the structural or electrical appropriateness of this design, and will not assume responsibility for improper engineering, construction, handling, or use. All materials and construction must comply with the most stringent applicable Federal and local fire, safety, energy, and Environmental Codes.



1	1E	VALANCE
2	2A	PAN GUAN
3	3A	28'-0" A/ELECTRIC
4	3A	28'-0" A/ELECTRIC
5	3A	28'-0" A/ELECTRIC
6	3A	28'-0" A/ELECTRIC
7	4A	BLACKBOXER
8	4A	VIDEO SCREEN
9	4A	28'-0" A/ELECTRIC
10	4A	28'-0" A/ELECTRIC
11	4A	28'-0" A/ELECTRIC
12	4A	28'-0" A/ELECTRIC
13	4A	28'-0" A/ELECTRIC
14	4A	28'-0" A/ELECTRIC
15	4A	28'-0" A/ELECTRIC
16	4A	28'-0" A/ELECTRIC
17	4A	28'-0" A/ELECTRIC
18	4A	28'-0" A/ELECTRIC
19	4A	28'-0" A/ELECTRIC
20	4A	28'-0" A/ELECTRIC
21	4A	28'-0" A/ELECTRIC
22	4A	28'-0" A/ELECTRIC
23	4A	28'-0" A/ELECTRIC
24	4A	28'-0" A/ELECTRIC
25	4A	28'-0" A/ELECTRIC
26	4A	28'-0" A/ELECTRIC
27	4A	28'-0" A/ELECTRIC
28	4A	28'-0" A/ELECTRIC
29	4A	28'-0" A/ELECTRIC
30	4A	28'-0" A/ELECTRIC
31	4A	28'-0" A/ELECTRIC
32	4A	28'-0" A/ELECTRIC
33	4A	28'-0" A/ELECTRIC
34	4A	28'-0" A/ELECTRIC
35	4A	28'-0" A/ELECTRIC
36	4A	28'-0" A/ELECTRIC
37	4A	28'-0" A/ELECTRIC
38	4A	28'-0" A/ELECTRIC
39	4A	28'-0" A/ELECTRIC
40	4A	28'-0" A/ELECTRIC
41	4A	28'-0" A/ELECTRIC
42	4A	28'-0" A/ELECTRIC
43	4A	28'-0" A/ELECTRIC
44	4A	28'-0" A/ELECTRIC
45	4A	28'-0" A/ELECTRIC
46	4A	28'-0" A/ELECTRIC
47	4A	28'-0" A/ELECTRIC
48	4A	28'-0" A/ELECTRIC
49	4A	28'-0" A/ELECTRIC
50	4A	28'-0" A/ELECTRIC
51	4A	28'-0" A/ELECTRIC
52	4A	28'-0" A/ELECTRIC
53	4A	28'-0" A/ELECTRIC
54	4A	28'-0" A/ELECTRIC
55	4A	28'-0" A/ELECTRIC
56	4A	28'-0" A/ELECTRIC
57	4A	28'-0" A/ELECTRIC
58	4A	28'-0" A/ELECTRIC
59	4A	28'-0" A/ELECTRIC
60	4A	28'-0" A/ELECTRIC
61	4A	28'-0" A/ELECTRIC
62	4A	28'-0" A/ELECTRIC
63	4A	28'-0" A/ELECTRIC
64	4A	28'-0" A/ELECTRIC
65	4A	28'-0" A/ELECTRIC
66	4A	28'-0" A/ELECTRIC
67	4A	28'-0" A/ELECTRIC
68	4A	28'-0" A/ELECTRIC
69	4A	28'-0" A/ELECTRIC
70	4A	28'-0" A/ELECTRIC
71	4A	28'-0" A/ELECTRIC
72	4A	28'-0" A/ELECTRIC
73	4A	28'-0" A/ELECTRIC
74	4A	28'-0" A/ELECTRIC
75	4A	28'-0" A/ELECTRIC
76	4A	28'-0" A/ELECTRIC
77	4A	28'-0" A/ELECTRIC
78	4A	28'-0" A/ELECTRIC
79	4A	28'-0" A/ELECTRIC
80	4A	28'-0" A/ELECTRIC
81	4A	28'-0" A/ELECTRIC
82	4A	28'-0" A/ELECTRIC
83	4A	28'-0" A/ELECTRIC
84	4A	28'-0" A/ELECTRIC
85	4A	28'-0" A/ELECTRIC
86	4A	28'-0" A/ELECTRIC
87	4A	28'-0" A/ELECTRIC
88	4A	28'-0" A/ELECTRIC
89	4A	28'-0" A/ELECTRIC
90	4A	28'-0" A/ELECTRIC
91	4A	28'-0" A/ELECTRIC
92	4A	28'-0" A/ELECTRIC
93	4A	28'-0" A/ELECTRIC
94	4A	28'-0" A/ELECTRIC
95	4A	28'-0" A/ELECTRIC
96	4A	28'-0" A/ELECTRIC
97	4A	28'-0" A/ELECTRIC
98	4A	28'-0" A/ELECTRIC
99	4A	28'-0" A/ELECTRIC
100	4A	28'-0" A/ELECTRIC



LD - 9592

**CCLD**  
 CREATION OF LIGHTING DESIGN  
 4701 Broadway - #211  
 New York - New York - 10034  
 866.790.4706  
 chambersdesign@gmail.com  
 www.cclighting.com

**BALLET MEMPHIS**  
**PTER PAN**  
 THE ORPHEUM  
 1425 1/2 Main St  
 Memphis, TN  
 (901) 526-8000  
 https://orphan-memphis.com

CHOREOGRAPHED BY STEVEN McMAHON  
 SCENERY BY BEOWULF BORTT  
 CLOTHES BY ANNE ARMIT  
 LIGHTING BY CHRISTOPHER CHAMBERS

**SECTION AT C** PLATE: **2** OF **2**  
 SCALE: 1/4" = 1'-0" DATE: 4.3.18 DRAWN BY: CSC REV: Rev Date