

48-17	80
49-4	89
BALLET MEMPHIS RP - BOUNCE	IN 48-17 85
48-17	87
47-17	86
47-17	85
48-17	84
46-4	83
HOUSE LEND CYC	IN 48-17 83
45-17	81
STAR DROP	44-17 80
SUN DISK	44-17 79
43-17	78
43-4	77
MOON	42-17 76
42-17	75
TREE DROP - UNDERGROUND	41-17 74
41-17	73
TREE DROP - NEWIRLAND	40-17 72
39-17	71
39-17	70
38-17	69
38-17	68
38-17	67
37-17	66
CHINA SILK WATER	37-4 65
36-17	64
OVAL PORTAL 1A	IN 36-17 63

PRATE SAL	36-17 63
36-17	62
48 ELECTRIC	32-17 59
32-17	58
32-17	57
32-17	56
31-17	55

4A ELECTRIC	28-17 54
28-17	53

WINDOW WALL	27-17 53
WINDOW WALL	27-17 52
28-17	51
28-17	50
28-17	49
3 ELECTRIC	25-17 47
24-17	46
24-17	45
24-17	44

23-17	43
22-17	42
22-17	41
22-17	40
22-17	39
22-17	38
22-17	37
19-17	36
19-4	35
18-17	34
18-17	33
17-17	32
17-17	31
17-17	30
16-4	29
15-17	28

OVAL PORTAL 2	IN 14-17 27
14-17	26
14-17	25
13-17	24
12-17	23
12-17	22
12-17	21
12-17	20
12-17	19
12-17	18
12-17	17
12-17	16
12-17	15
12-17	14
12-17	13
12-17	12
12-17	11
12-17	10
12-17	9
12-17	8
12-17	7
12-17	6
12-17	5
12-17	4
12-17	3
12-17	2
12-17	1

PRATE SHIP PROPS	14-17 27
14-17	26
14-17	25
14-17	24
14-17	23
14-17	22
14-17	21
14-17	20
14-17	19
14-17	18
14-17	17
14-17	16
14-17	15
14-17	14
14-17	13
14-17	12
14-17	11
14-17	10
14-17	9
14-17	8
14-17	7
14-17	6
14-17	5
14-17	4
14-17	3
14-17	2
14-17	1

PAN LOAD LBS RP	14-17 27
14-17	26
14-17	25
14-17	24
14-17	23
14-17	22
14-17	21
14-17	20
14-17	19
14-17	18
14-17	17
14-17	16
14-17	15
14-17	14
14-17	13
14-17	12
14-17	11
14-17	10
14-17	9
14-17	8
14-17	7
14-17	6
14-17	5
14-17	4
14-17	3
14-17	2
14-17	1

1 ELECTRIC	33-17 37
33-17	36
33-17	35
33-17	34
33-17	33
33-17	32
33-17	31
33-17	30
33-17	29
33-17	28
33-17	27
33-17	26
33-17	25
33-17	24
33-17	23
33-17	22
33-17	21
33-17	20
33-17	19
33-17	18
33-17	17
33-17	16
33-17	15
33-17	14
33-17	13
33-17	12
33-17	11
33-17	10
33-17	9
33-17	8
33-17	7
33-17	6
33-17	5
33-17	4
33-17	3
33-17	2
33-17	1

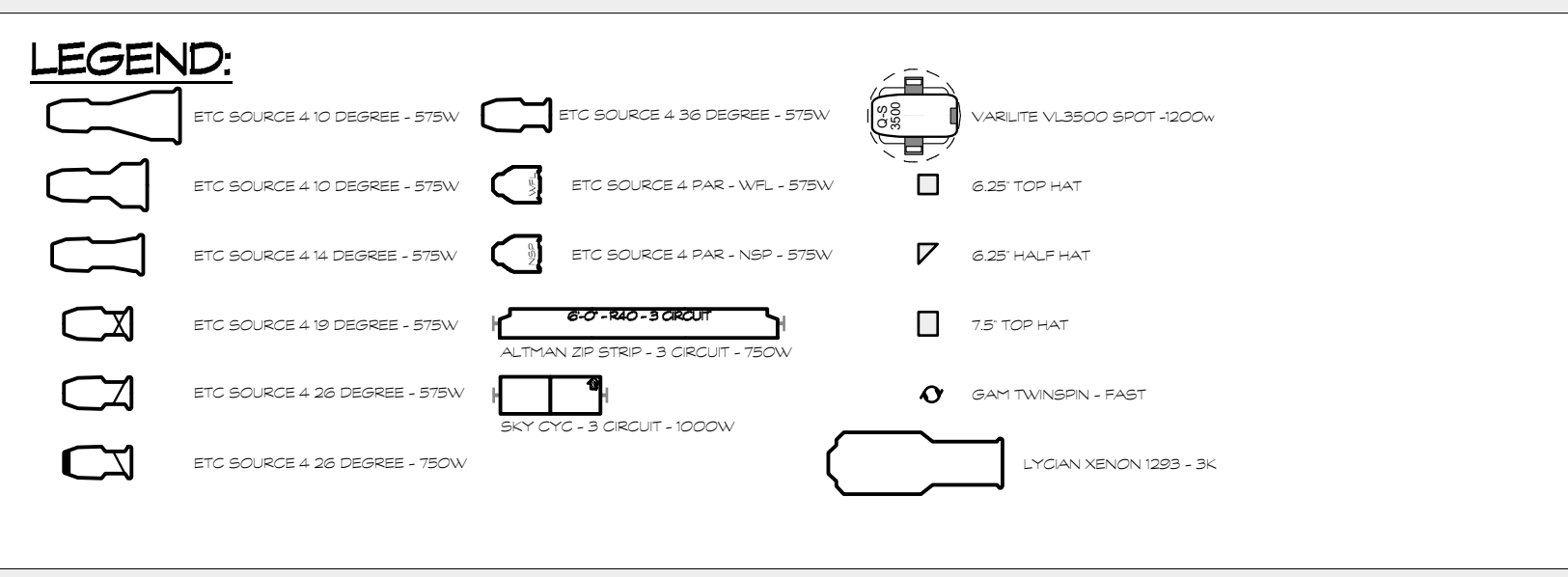
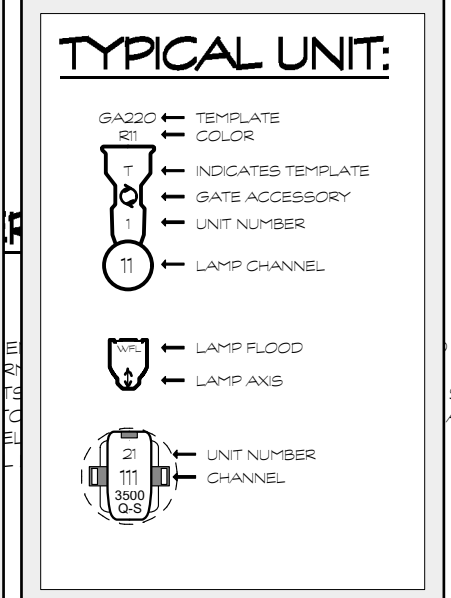
VIDEO SCREEN	8-17 8
8-17	7
8-17	6
8-17	5
8-17	4
8-17	3
8-17	2
8-17	1

A ELECTRIC	29-17 3
29-17	2
29-17	1

VALANCE	1-17 1
---------	--------

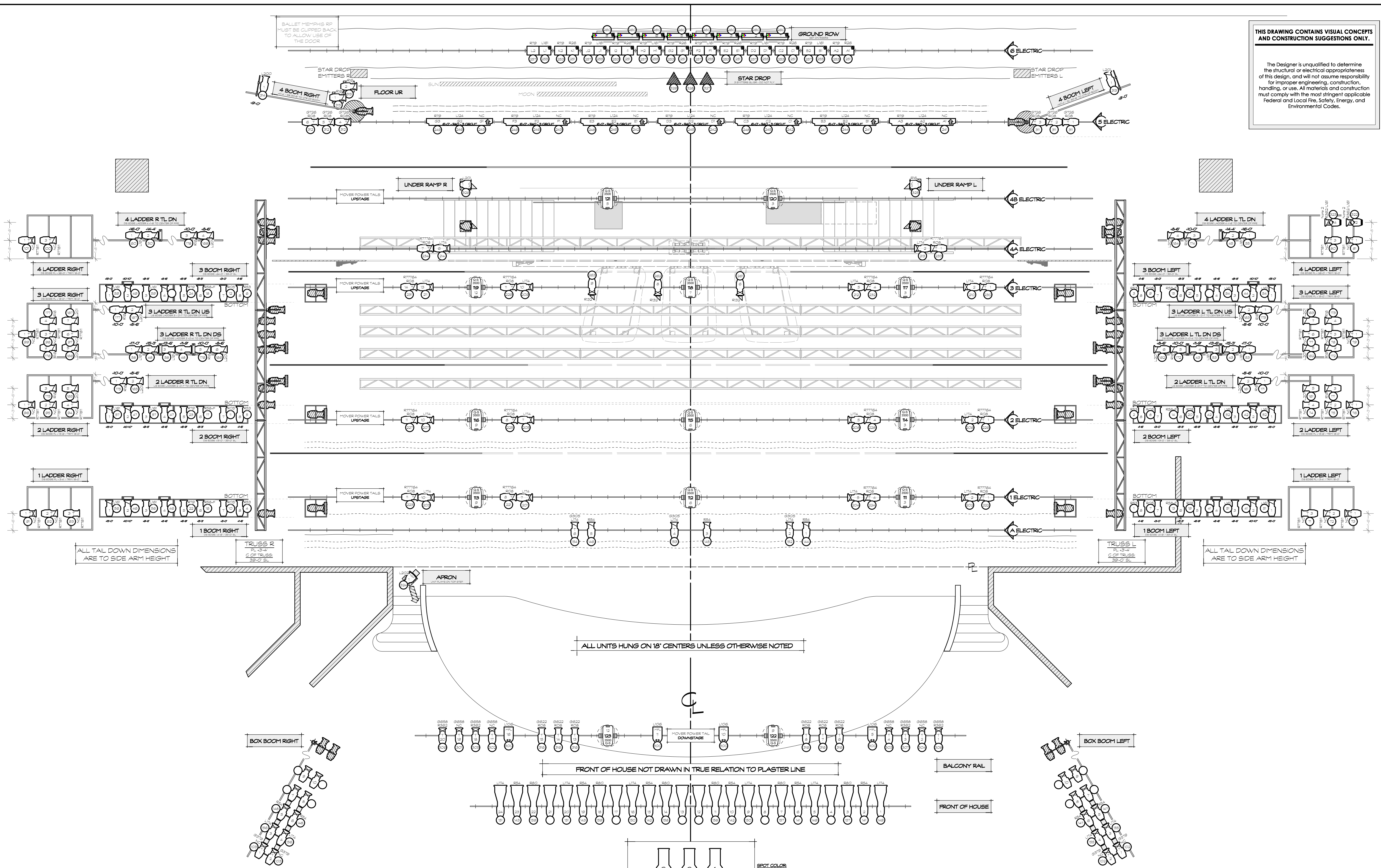
**GENERAL NOTES:**

- MEASUREMENTS ON ALL BOOMS, TOWERS, TORMS AND LADDERS ARE FROM STAGE FLOOR TO SIDE ARM OR HANGING POSITION.
- TRIM HEIGHTS ON ALL OVERHEAD ELECTRICS ARE FROM STAGE FLOOR TO BOTTOM HANGING PIPE OR TRUSS.
- ALL UNITS TO BE HUNG, CIRCUITED, PATCHED, COLORED AND TESTED PRIOR TO FOCUS.
- ALIGN ALL ELLIPSOIDS PRIOR TO INSTALLATION.
- STIFFEN ALL LIGHTING BOOMS AND ELECTRICS.
- ALL ELECTRICS TO RECEIVE FINAL TRIM AT FOCUS.
- EXACT PLACEMENT OF ALL FLOOR MOUNTED UNITS TO BE DETERMINED BY LIGHTING DESIGNER ON SITE.
- PROVIDE SPARE UNITS OF EACH TYPE.
- PROVIDE SPARE CIRCUITS AT ALL POSITIONS.
- PLEASE SINGLE CIRCUIT WHENEVER POSSIBLE.
- PROVIDE DONUTS FOR ALL TEMPLATE UNITS.
- PLEASE PROVIDE BLACKWRAP, BLACKTAG, AND SPARE L209, R32, R19, R14, R04 FOR FOCUS.



**THIS DRAWING CONTAINS VISUAL CONCEPTS AND CONSTRUCTION SUGGESTIONS ONLY.**

The Designer is unqualified to determine the structural or electrical appropriateness of this design, and will not assume responsibility for improper engineering, construction, handling, or use. All materials and construction must comply with the most stringent applicable Federal and Local Fire, Safety, Energy, and Environmental Codes.



ALL TAIL DOWN DIMENSIONS ARE TO SIDE ARM HEIGHT

ALL TAIL DOWN DIMENSIONS ARE TO SIDE ARM HEIGHT

ALL UNITS HUNG ON 18" CENTERS UNLESS OTHERWISE NOTED

FRONT OF HOUSE NOT DRAWN IN TRUE RELATION TO PLASTER LINE

LD - 9592

Signature: *[Handwritten Signature]*

**CCLD**  
CHRISTOPHER CHAMBERS LIGHTING DESIGN

470 Broadway, #311  
New York, New York, 10036

800.770.4706  
chambersdesign@gmail.com  
www.cclighting.com

**BALLET MEMPHIS**  
**PTER PAN**

THE ORPHEUM  
323 S Main St  
Memphis, TN  
38103  
(901) 525-3000  
http://www.orpheumtms.com

CHOREOGRAPHED BY STEVEN McMAHON  
SCENERY BY BEOWULF BORITT  
CLOTHES BY ANNE ARMIT  
LIGHTING BY CHRISTOPHER CHAMBERS

**LIGHT PLOT**

SCALE: 1/4" = 1'-0" DATE: 4.3.16 DRAWN BY: CSC REV: Rev Date

PLATE 1 OF 2